

CÔNG TY CỔ PHẦN  
DAP SỐ 2 - VINACHEM

CỘNG HÒA XÃ HỘI CHỦ NGHĨA VIỆT NAM  
Độc lập - Tự do - Hạnh phúc

Số: 1040/TB-DAP2

Lào Cai, ngày 10 tháng 7 năm 2023

### THÔNG BÁO

V/v Bổ sung thông tin của Thư chào giá số 1017/DAP2-KT ngày 5/7/2023

Căn cứ vào thư mời số 1017/DAP2-KT ngày 5/7/2023 về việc mời chào giá cạnh tranh gói mua sắm cung cấp vật tư phục vụ sửa chữa.

Bên mời chào giá, Công ty cổ phần DAP số 2 – Vinachem xin thông báo về việc bổ sung thông tin thuộc Thư chào giá số 1017/DAP2-KT ngày 5/7/2023 của Công ty chúng tôi, cụ thể như sau:

1. Bổ sung lại thông tin tại bản vẽ cốp chận V3, Tấm số 2,3,4 v2 và Tấm số 5,6,7 v2. Chi tiết tại bản vẽ kèm theo thông báo này.

Trân trọng./.

Nơi nhận:

- Như trên;
- Lưu: VT, TCG

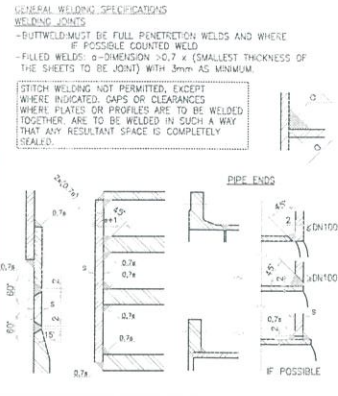
TỔNG GIÁM ĐỐC



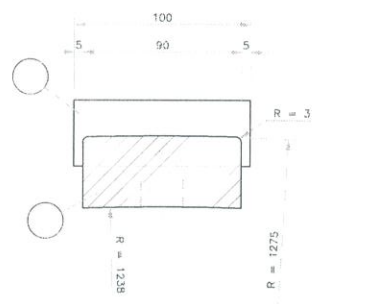
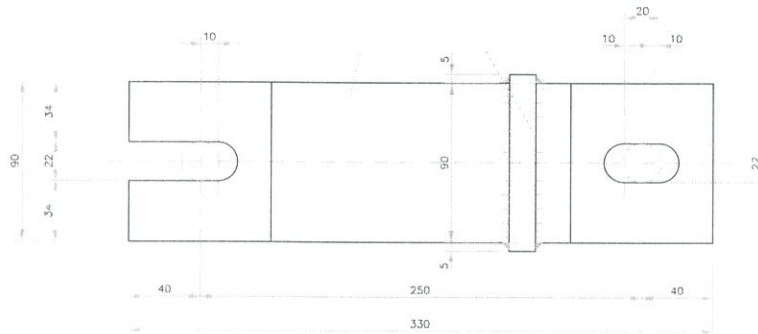
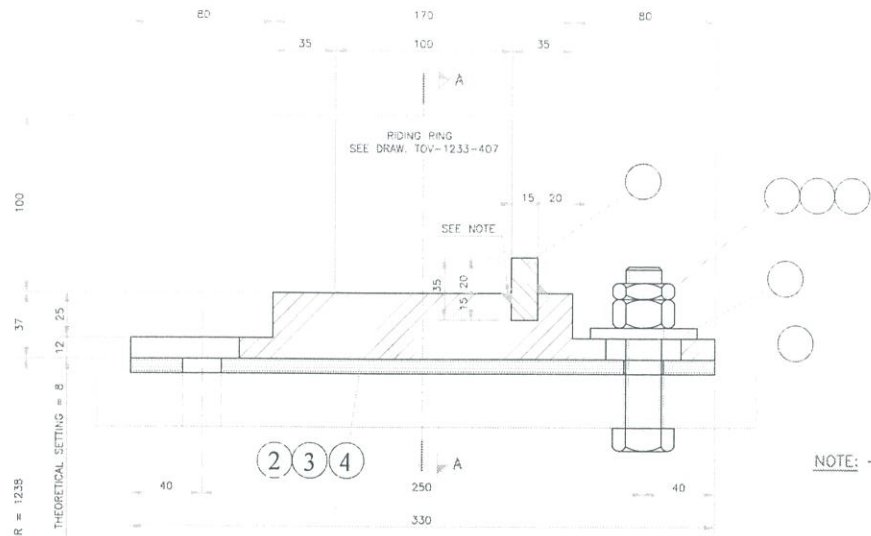
Vũ Việt Tiến



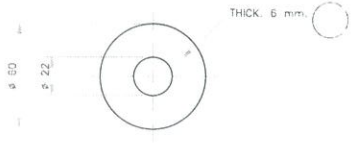
WEIGHT = 519 Kgs.



NOTE: - WELDING MUST BE BRUSHED UP TO ALLOW THE CORRECT INSTALLATION OF THE RIDING RING



SECTION A A



Item	Qty	Description	Material	Observations	Weight
BB	M-20 NUT DIN-934				
BB	M-20 NUT DIN-934				
BB	M-20 x 95 SCREW DIN-931				
BB	ø 60/22 ø PLANE WASHER THICK. 6 mm.			S 275 JR	11
4	44	330 x 90 x 3 PLATE		S 275 JR	30
3	BR	330 x 90 x 2 PLATE		S 275 JR	40
2	44	330 x 90 x 1 PLATE		S 275 JR	10
	44	100 x 35 x 15 PLATE		S 355 JR	18
	44	330 x 90 x 40 PLATE		S 275 JR	410

REV.	DESCRIPTION	DATE	SIGN.

SCALE: 1/2    TOVRECAL    DRAWING: TOV-1233-408    REV: -

CUSTOMER: TOYO - VINACHEM    GRP: 1765 CM 1212

TITLE: COATER DRUM ø 2,4 x 6  
RIDING RINGS SHOES

DRAWN: MEC    DATE: 21-01-13    TECHNICAL MANAGER: LMU    PROJECT MANAGER: DPM    ENGINEERING DEP.: JMEC

**COMSPAIN**    ISO 9001    BUREAU VERITAS    REKAYASA

C/ BRAVO MURILLO, 23    28015 MADRID (ESPAÑA)

This drawing is proprietary of COMSPAIN, it cannot be reproduced without COMSPAIN'S authorization.

Ø	INITIAL	MEC	JMEC	SHV	DPM	DPM	LMU	DATE	
								01/21/13	
REV.	DESCRIPTION	DWN.	CHK'D	A/E	CHIEF	MGR	APPR	ISSUE	DATE
									MM/DD/YY

DAP NO.2 - VINACHEM PROJECT

DAP NO.2 VINACHEM JSC



THIS DRAWING, INCLUDING ANY PATENTED OR PATENTABLE FEATURES, REMAINS CONFIDENTIAL INFORMATION OF THE TOYO-THAI CORPORATION PUBLIC COMPANY LTD. AND ITS USE IS CONDITIONED UPON THE USER'S AGREEMENT NOT TO REPRODUCE THE DRAWING IN WHOLE OR IN PART NOR THE MATERIAL DESCRIBED THEREON, NOR TO USE THE DRAWING FOR ANY PURPOSE OTHER THAN SPECIFICALLY PERMITTED IN WRITING BY THE TOYO-THAI CORPORATION PUBLIC COMPANY LTD.

ABB: FOR ISSUE  
C=CUSTOMER  
L=LICENSOR  
F=FIELD  
V=VENDOR

**บริษัท ไทย-ไทย คอร์ปอเรชั่น จำกัด (มหาชน)**  
**TOYO-THAI CORPORATION PUBLIC COMPANY LIMITED**

TTCL JOB    ACCOUNT    CUSTOMER'S ORDER

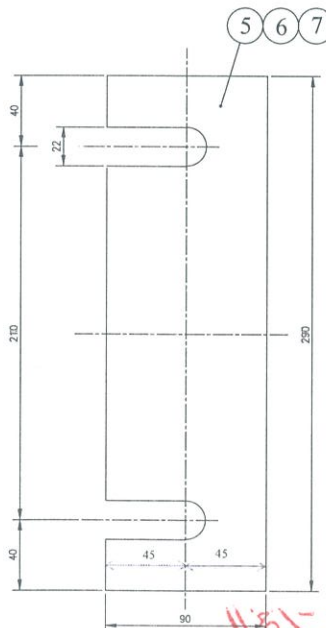
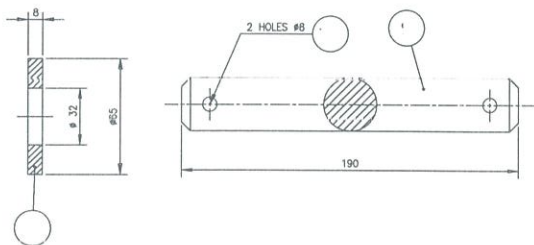
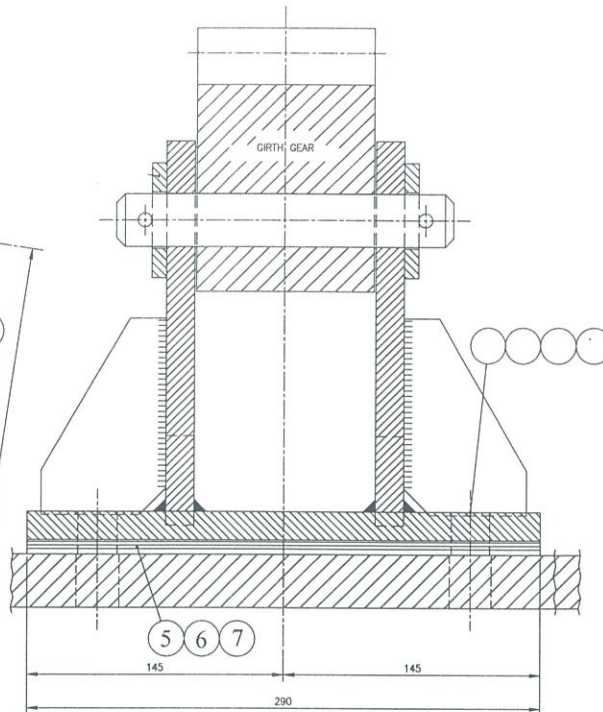
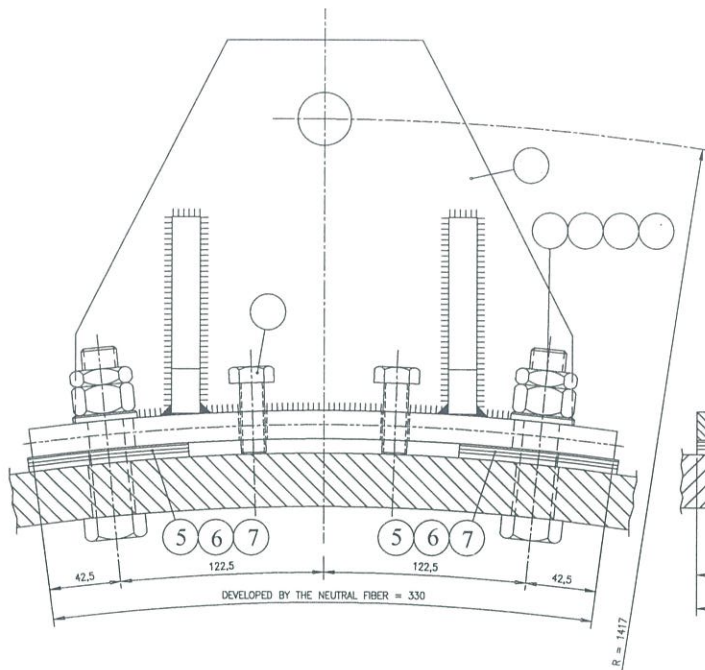
No. F-032    No. F-032-512005-F00003091

ISSUE MARK: 01/21/13

SHOP-DETAIL DRAWING FOR LOCAL FABRICATION:  
COATER RIDING RINGS SHOES

SCALE 1:2    DWG. No. 23M103-20-008

||@|| CHH SC 5 18 ||



Item	Qty.	Description	Material	Observations	Weight
8		GIRTH GEAR SUPPORT	S 275 JR	BY COMSPAIN	
4		M-14 x 40 SCREW DIN-933	C: 8.B	BY COMSPAIN	
16		COTTER PIN # 7,7 DIN 94	S 275 JR	BY COMSPAIN	
8		ROUND #30 LENG.=190	F-114	BY COMSPAIN	
16		WASHER #65/#32 THK.=B	S 275 JR	BY COMSPAIN	
32		M-20 PLANE WASHER DIN-125	S 275 JR	BY COMSPAIN	
32		M-20 NUT DIN-936	C: 8.B	BY COMSPAIN	
32		M-20 NUT DIN-934	C: 8.B	BY COMSPAIN	
32		M-20 x 95 SCREW DIN 931	C: 8.B	BY COMSPAIN	
7	16	290 x 90 x 3 PLATE	S 275 JR	BY COMSPAIN	
6	32	290 x 90 x 2 PLATE	S 275 JR	BY COMSPAIN	
5	16	290 x 90 x 1 PLATE	S 275 JR	BY COMSPAIN	

REV.	DESCRIPTION	DATE	SIGN.
1	UPDATED	20-11-13	AOM

SCALE/ 1/2 TOVRSCOM DRAWING/ TOV-1233-4001 REV.-1

CUSTOMER/ TOYO - VINACHEM ORDER/ 1765 CM 1212

TITLE/  
COATER DRUM  $\phi$  2,4 x 7  
ASSEMBLY SPECIFICATIONS FOR GIRTH GEAR SUPPORT

DRAWN: AOM DATE: 06-11-13 TECHNICAL MANAGER: LMU PROJECT MANAGER: DPM ENGINEERING DEP.: JMEC

**COMSPAIN**  
C/ BRAVO MURILLO, 23 28015 MADRID (ESPAÑA) REKAYASA

ISO 9001  
CERTIFICATION

ISO 9001  
CERTIFICATION

This drawing is proprietary of COMSPAIN, it cannot be reproduced without COMSPAIN'S authorization.

REV.	DESCRIPTION	DWN.	CHK'D	A/E	CHIEF	MGR	APPR	ISSUE	DATE
0	FOR APPROVAL	AOM	JMEC	SHV	DPM	DPM	LMU	JMEC	11/06/13

DAP NO.2 - VINACHEM PROJECT

**G** DAP NO.2 VINACHEM JSC

TTCL M CECO

THIS DRAWING, INCLUDING ANY PATENTED OR PATENTABLE FEATURES, EMBODIES CONFIDENTIAL INFORMATION OF THE TOYO-THAI CORPORATION PUBLIC COMPANY LTD. AND ITS USE IS CONDITIONED UPON THE USER'S AGREEMENT NOT TO REPRODUCE THE DRAWING IN WHOLE OR IN PART, NOR THE MATERIAL DESCRIBED THEREON, NOR TO USE THE DRAWING FOR ANY PURPOSE OTHER THAN SPECIFICALLY PERMITTED IN WRITING BY THE TOYO-THAI CORPORATION PUBLIC COMPANY LTD.

ARRR. FOR ISSUE  
C-CUSTOMER  
L-LICENSOR  
F-FIELD  
V-VENDOR

**บริษัท ไทย-ไทย คอร์ปอเรชั่น จำกัด (มหาชน)**  
TOYO-THAI CORPORATION PUBLIC COMPANY LIMITED

TTCL TITEL JOB ACCOUNT CUSTOMER'S ORDER  
No. F-032 No. F-032-510000-P00000001

ISSUE MARK  
02/04/13

COATER DRUM  $\phi$  2,4 x 7  
ASSEMBLY SPECIFICATIONS FOR GIRTH GEAR SUPPORT

SCALE 1:2 DWG. No. 23M103-10-002 (1/2)